

CERTIFIED RECORD OF LAND CORNER MONUMENTATION

History of original corner establishment:

The original corner was established by Rufus S. Moore in 1881 under Contract No. 382, dated March 1881.

The original notes state:

N 89°39' E on a true line bet sec 30 & 31
39.90 Set a Y. Pine post for 1/4 sec cor from which
A Y. Pine 9 ins dia bears S 3 lks dist
A Y. Pine 14 ins dia bears N 83° W 65 lks dist.

DIAGRAM
T10S R31E
S30
1/4---
S31

Description of corner evidence found:

Found no evidence of the original post.
A 14" P.Pine bears South 2.0 ft to face (South 3 lks), BT visible in the lower blaze which faces Northwest.
A deteriorated stump bears N 82° W, 40.8 ft to center (N 83° W, 65 lks).

Description of monument and accessories I establish to perpetuate the original location of this corner:

I reestablish this corner at record distance and direction from the nearest of the original bearing trees. Set a 2½x28" aluminum monument 20" in the ground in a mound of stone.

I establish new bearing trees:

A 10" Fir bears N 50° E, 49.0 ft, scribed 1/4S30BT.
A 13" Fir bears S 56° W, 54.4 ft, scribed 1/4S31BT.

T10S R31E
S30
1/4---
S31
PLS1918
1988

Sun Cadastral Survey, Cont. No. 53-04H1-7-4011

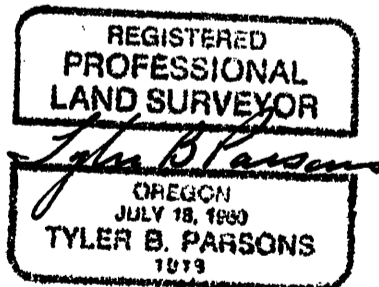
Field Book: 4-61 & 7-5

Work accomplished: 10/25/88

Witnesses: Tyler Parsons, Louise Parsons, Lowell Seaders

New BTs have 3/4" brass washers marked PLS1918 attached to the BT blaze, faces and bands painted with red tree marking paint, and BT tags and Land Survey Monument signs. A steel fence post with Land Survey Monument sign is driven approximately 3-5 feet from the corner.

PARSONS SURVEYING
1915 S.E. Stone Street
Corvallis, OR 97333
(503) 752-7515



Office of County Surveyor County of GRANT
State of OREGON, I hereby certify that the within instrument was filed in this office
for record on the 10th day of Feb, 1989

Robert D. Buzett by _____
(COUNTY OFFICIAL) (DEPUTY)